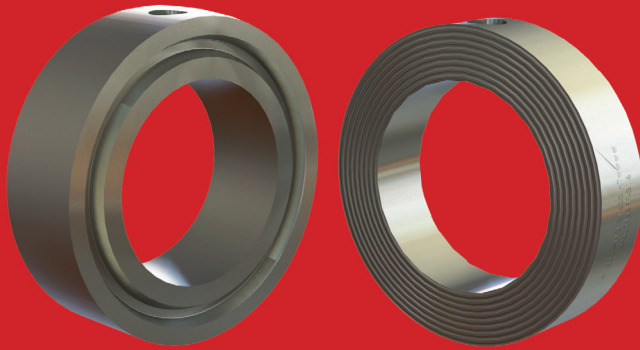


Bleed Rings

Bleed Rings (also known as a “vent rings”, “flushing rings” or “drip rings”) provide a means for draining/venting of pipe streams, sample take off points, attaching instruments or even bleeding of valves.

Bleed rings are fitted to standard flanges and are retained within the flange bolt circle using conventional gaskets or RTJ rings.

Bleed rings come in many different materials such as carbon steel, stainless steel, etc... depending on the intended use. They provide a convenient way of draining piping, taking samples, attaching instruments or even bleeding of a valve. When used with a valve and blind flange, it allows you to relieve the pressure if your valve is leaking before you remove the flange.



FEMALE RTJ BLEED RING

FF BLEED RING

STBR-03

FEATURES

- Facing Type - Flat Face ‘FF’, or Ring Type Joint Female ‘FRJ’ (FF has serrated machined face to ASME B16.5)
- Size, ANSI Class, Material, Heat Number and Part number etched on periphery of disc
- ID and OD are machined and de-burred
- MATERIALS: Carbon Steel, Stainless Steel 304 & 316, Duplex, Super Duplex, Monel, Inconel
- SIZES: 0.5” to 24” (15DN to 600DN) - other sizes available upon request
- ANSI class - 150-2500 ANSI
- Manufactured in accordance with ASME B16.5, ASME B16.20, ASME B16.47 & ASME B16.48
- OPTIONS: Painted or special coatings (i.e. Stellite), please state with inquiry

ORDERING INFORMATION

Part number format for ordering is as follows; SIZE-ANSI-TYPE-CONNECTION-MTL

Size	0.5" - 24" (other sizes available upon request)			
ANSI	150, 300, 600, 900, 1500 & 2500			
Type	BRFF = Flat Face or BRFRJ = Female RTJ ring			
Connection	N = 1/2" FNPT or SW = Socket Weld			
MTL	P = PVC	304 = 304 St. Steel	D = Duplex	M = Monel
	CS = Carbon Steel	316 = 316 St. Steel	SD = Super Duplex	I = Inconel

WORKED EXAMPLES

STBR-1-150-BRFF-SW-316	1" 150 ANSI Bleed Ring Flat Face with socket weld connection in 316 St. Steel
STBR-24-1500-BRFRJ-N-SD	24" 1500 ANSI Bleed Ring Female RTJ with NPT connection in Super Duplex